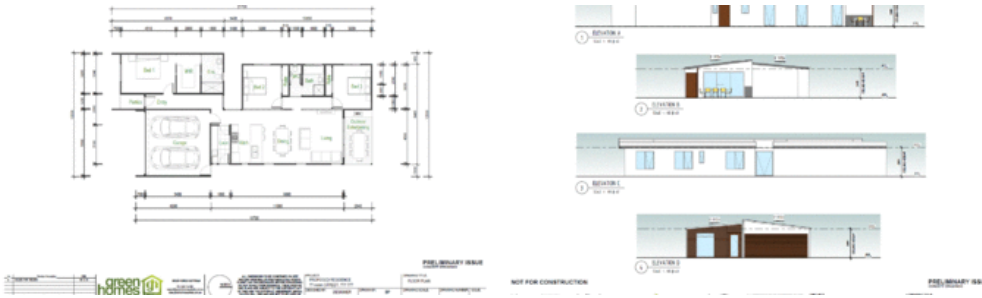


## Looking for a Premium House and Land Package



Anketell

green homes 1911



### Premium House and Land Package

If you are looking for a premium house and land package which will tick all your boxes and also be energy efficient. Look no further than this house and land package from Green Homes Australia. Featuring three bedrooms, open plan lounge and dining area. Outdoor entertaining area. Main bedroom with WIR and ensuite. Featuring

Energy efficient design. ISO 50001 Energy Efficient Home Certificate exclusive to Green Homes Australia Draught sealing to European standards Upgraded insulation package as standard Exclusive bathroom choices and Water saving tapware from Reece Floor tiling or polished grey concrete to living areas and carpets to bedrooms Full internal painting, premium kitchen with stone benchtop and soft close draws. Earthworks and site costs allowance Solar hot water system Quality Smeg kitchen appliances and UPVC double glazing.

Too many inclusions to list call to find out more information.

*The above information provided has been furnished to us by the vendor/s. We have not verified whether or not that information is accurate and do not have any belief in one way or the other in its accuracy. We do not accept any responsibility to any person for its accuracy and do no more than pass it on. All interested parties should make and rely upon their own inquiries in order to determine whether or not this information is in fact accurate.*

3 2 2

<b>Price</b>	\$413,857
<b>Property Type</b>	residential
<b>Property ID</b>	145
<b>Land Area</b>	284 m2
<b>Floor Area</b>	162 m2

#### Agent Details

Simone Fogarty - 0420 984 565

#### Office Details

Younique Property Group  
0420 984 565

